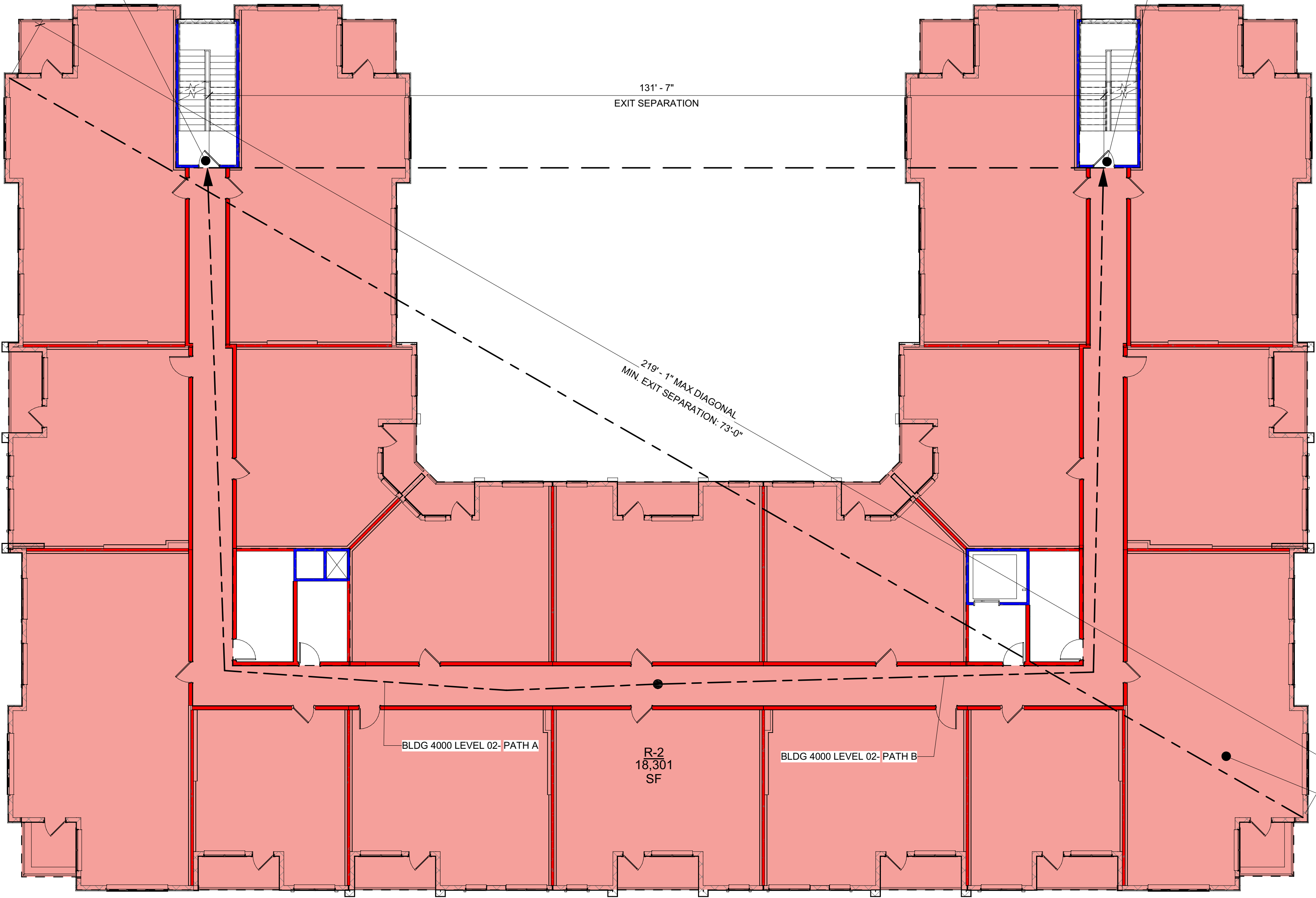


BLDG 4000 PATH OF TRAVEL - LEVEL 02

BLDG 4000 LEVEL 02- PATH A	137' - 9"
BLDG 4000 LEVEL 02- PATH B	138' - 2"

DOOR 02 & STAIR 02					TRIBUTARY OCC. LOAD 47	
DOOR	FIRE RATING	WIDTH REQUIRED	WIDTH PROVIDED	EXIT CAPACITY	EXIT DISCHARGE	
DOOR	90 MIN	52 x 47" = 9.4"	36" (34" CLR)	170	STAIR 02	
STAIR	2 HR	0.33 x 47" = 14.1"	44"	146	EXTERIOR	

DOOR 01 & STAIR 01					TRIBUTARY OCC. LOAD 46	
DOOR	FIRE RATING	WIDTH REQUIRED	WIDTH PROVIDED	EXIT CAPACITY	EXIT DISCHARGE	
DOOR	90 MIN	52 x 46" = 9.2"	36" (34" CLR)	170	STAIR 01	
STAIR	2 HR	0.33 x 46" = 13.8"	44"	146	EXTERIOR	



BUILDING 4000	
TOTAL AREA	18,445 SF
LOAD FACTOR	200 SF / OCC.
OCCUPANT LOAD	93
OCCUPANCY TYPE	R-2

LIFE SAFETY SUMMARY

BUILDING 4,000		CONSTRUCTION TYPE(S):		IB
STORIES:	03	BASEMENT:	NO	
USE GROUP(S):	R-2	GROSS AREA:	51,296 SF	
SPRINKLERS:	NFPA 13R	TOTAL UNITS:	46	

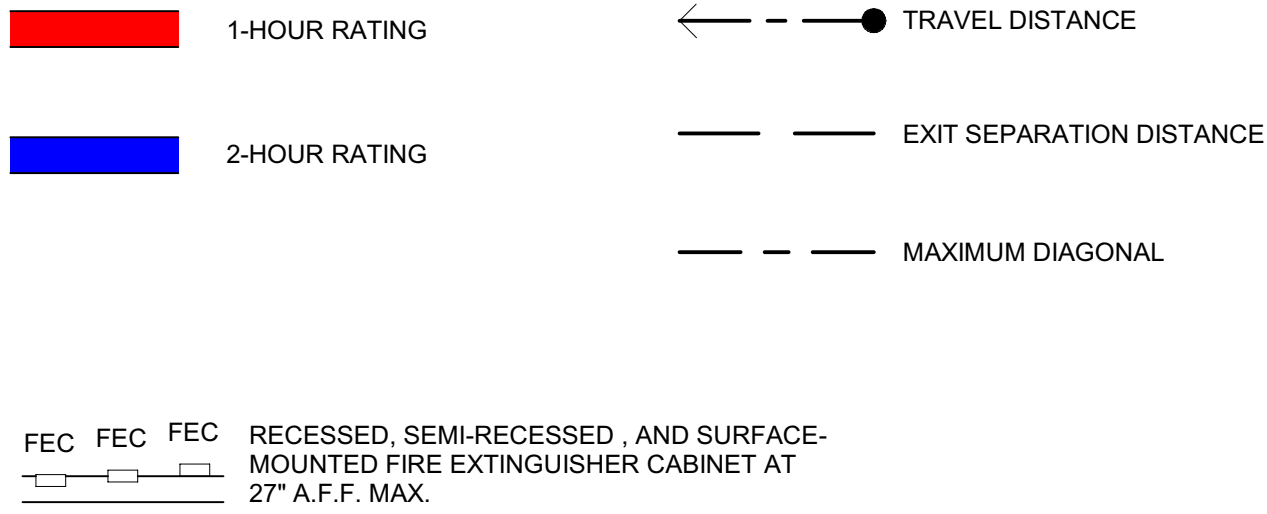
OCCUPANCY			
OCC.	AREA	LOAD FACTOR	OCC. LOAD
BUILDING 1000			
LEVEL 01			
A-3	3,189	15	213
M	2,456	60	42
R-2	12,099	200	62
S-2	1,365	4	
LEVEL 02			
	19,109		321
R-2	34,381	200	172
	34,381		172
LEVEL 03			
R-2	34,363	200	172
	34,363		172

OCCUPANCY			
OCC.	AREA	LOAD FACTOR	OCC. LOAD
LEVEL 05			
R-2	34,370	200	172
	34,370		172
BUILDING 2000			
LEVEL 01			
A-3	454	15	31
M	3,321	60	56
R-2	2,153	200	11
S-2	773	300	3
	6,701		101
LEVEL 02			
R-2	16,583	200	83

OCCUPANCY			
OCC.	AREA	LOAD FACTOR	OCC. LOAD
LEVEL 03			
	16,583		83
R-2	16,583	200	83
	16,583		83
LEVEL 05			
R-2	16,583	200	83
	16,583		83
BUILDING 3000			
LEVEL 01			
R-2	4,598	200	23
	4,598		23
LEVEL 02			
R-2	12,762	200	64
	12,762		64
LEVEL 03			
R-2	12,765	200	64
	12,765		64
LEVEL 05			
R-2	12,765	200	64
	12,765		64

OCCUPANCY			
OCC.	AREA	LOAD FACTOR	OCC. LOAD
BUILDING 4000			
LEVEL 01			
R-2	11,729	200	59
	11,729		59
LEVEL 02			
R-2	18,301	200	92
	18,301		92
LEVEL 03			
R-2	18,280	200	92
	18,280		92
CLUBHOUSE			
LEVEL 01			
A-3	4,031	15	270
B	3,186	100	35
	7,229		305

LEGEND



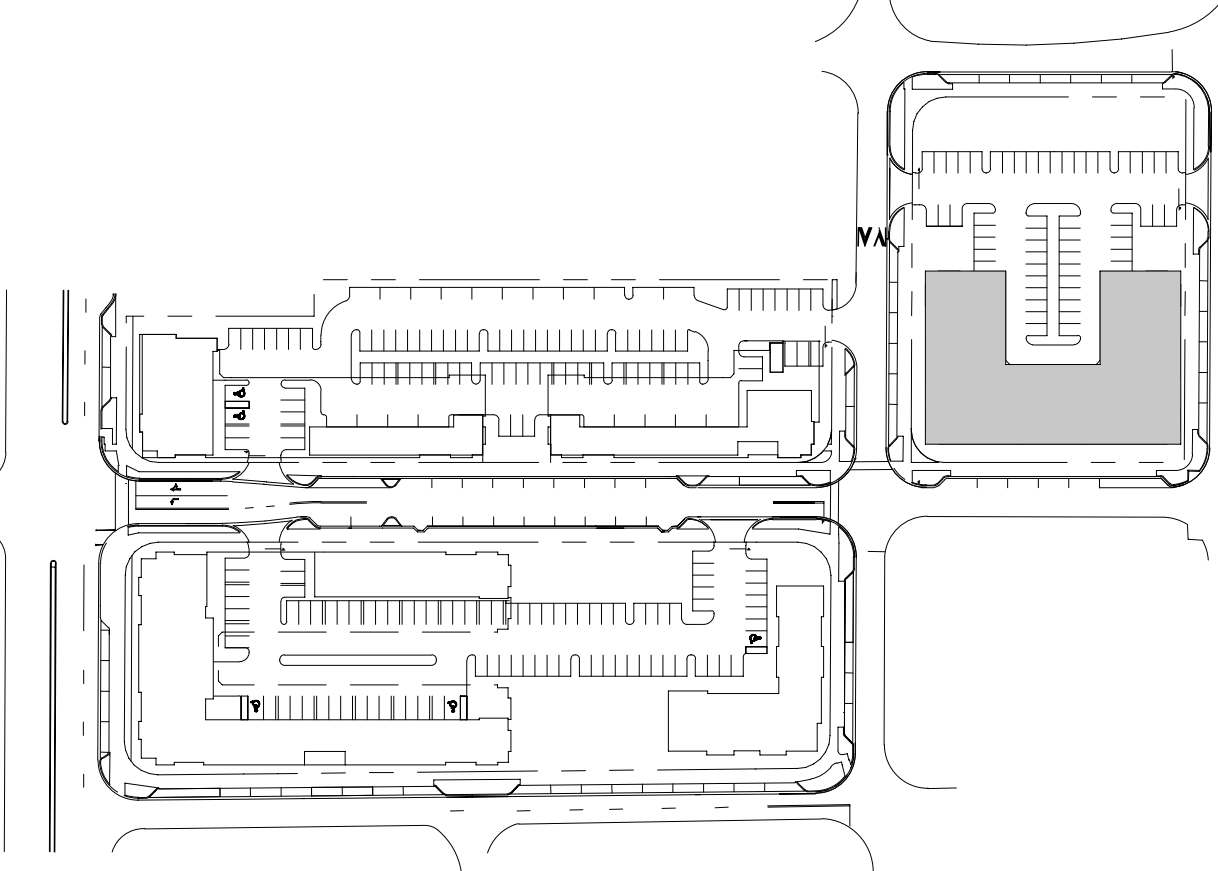
GENERAL NOTES

- SEE CODE DATA SHEET FLOOR PLANS FOR F.E.C. LOCATIONS. FIRE EXTINGUISHERS LOCATED IN PUBLIC AREAS AND BACK OF HOUSE ROOMS SHALL HAVE A MINIMUM RATING OF 10A-120B.C.
- INSTALL ONE (1) EACH 2A-10BC FIRE EXTINGUISHER UNDER KITCHEN SINK IN ALL APARTMENT UNITS.
- PER TABLE 508.4 OF THE 2023 FBC, 1 HOUR OCCUPANCY SEPARATION IS REQUIRED BETWEEN RESIDENTIAL, ASSEMBLY, AND BUSINESS OCCUPANCIES. RESIDENTIAL BUILDING TO BE EQUIPPED WITH AN AUTOMATIC SPRINKLER SYSTEM IN ACCORDANCE WITH SECTION 903.3.1.1 OF THE 2023 FBC.
- FIRE SPRINKLER DESIGNER TO CONFIRM LOCATION AND QUANTITY OF FIRE HOSE CABINETS AT HORIZONTAL EXITS/FIREWALLS.

1 BUILDING 4000 LEVEL 02

SCALE: 3/32" = 1'-0"

KEY PLAN



CONSULTANT:

Digitally signed by David Yung
Date: 2024.06.10 17:04:00
06/11/2024

1726 E ATLANTIC BLVD
POMPANO BEACH, FL 33060

PROJECT NUMBER: CLR2023-03

ATLANTIC ONE

220 MAIN ST
GAINESVILLE, FL 32601

THE COLLIER COMPANIES

DRAWING RELEASE DATE
DRC 06/11/2024

TITLE:
BUILDING 4000
LEVEL 02 CODE
DATA - LIFE
SAFETY PLAN

SHEET NUMBER:

CD-14